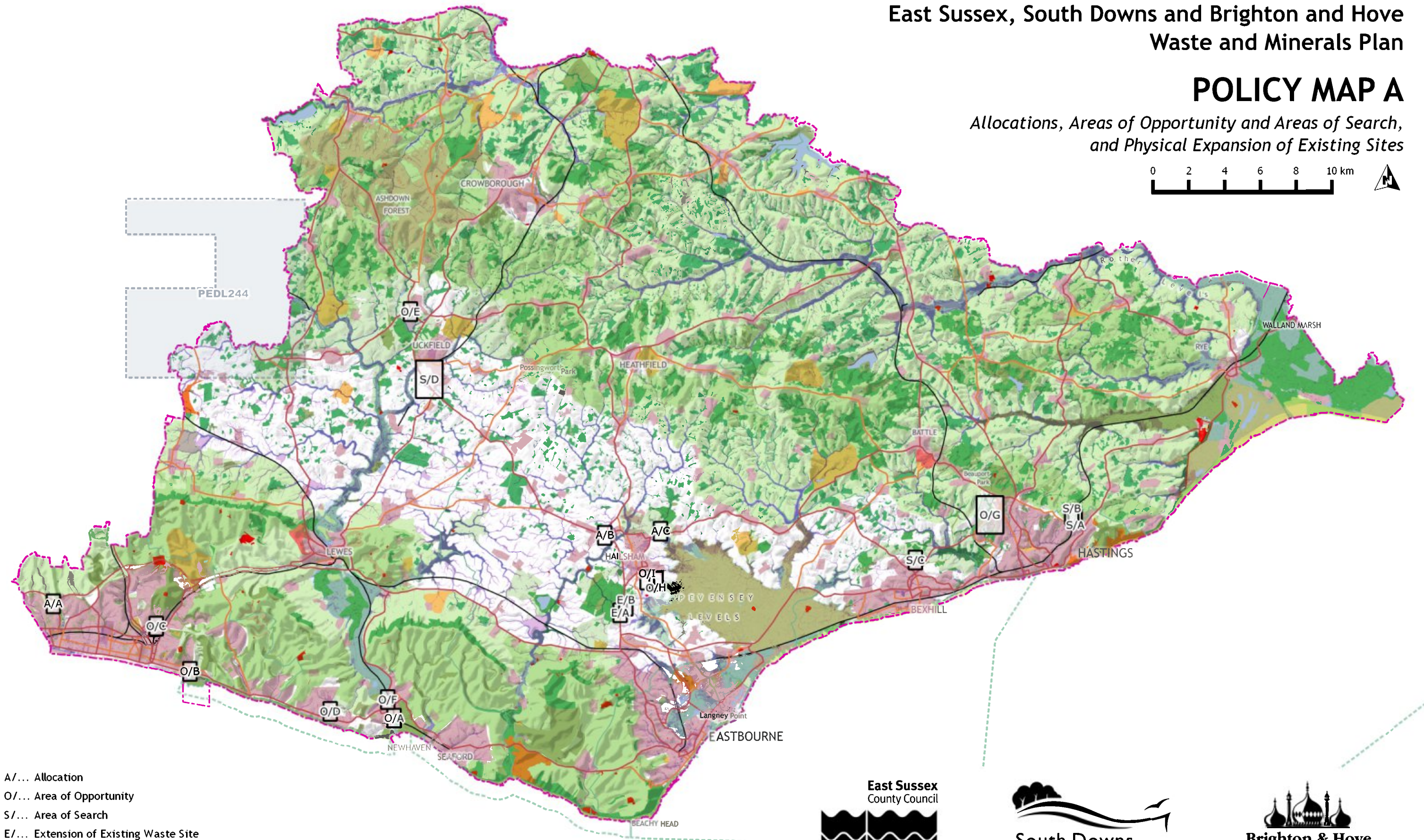
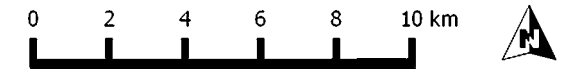


East Sussex, South Downs and Brighton and Hove Waste and Minerals Plan

POLICY MAP A

Allocations, Areas of Opportunity and Areas of Search,
and Physical Expansion of Existing Sites



- A/... Allocation
- O/... Area of Opportunity
- S/... Area of Search
- E/... Extension of Existing Waste Site

- WMSP Inset Map Boxes
- Plan Area
- Petroleum Exploration Development Licence Area
- Marine Conservation Zone
- Historic Battlefield
- Historic Parks and Gardens
- Country Parks
- Scheduled Monument
- EA Floodzone 2
- EA Floodzone 3
- Environmental Designation - Local
- Environmental Designation - National
- Environmental Designation - International
- National Park and AONB

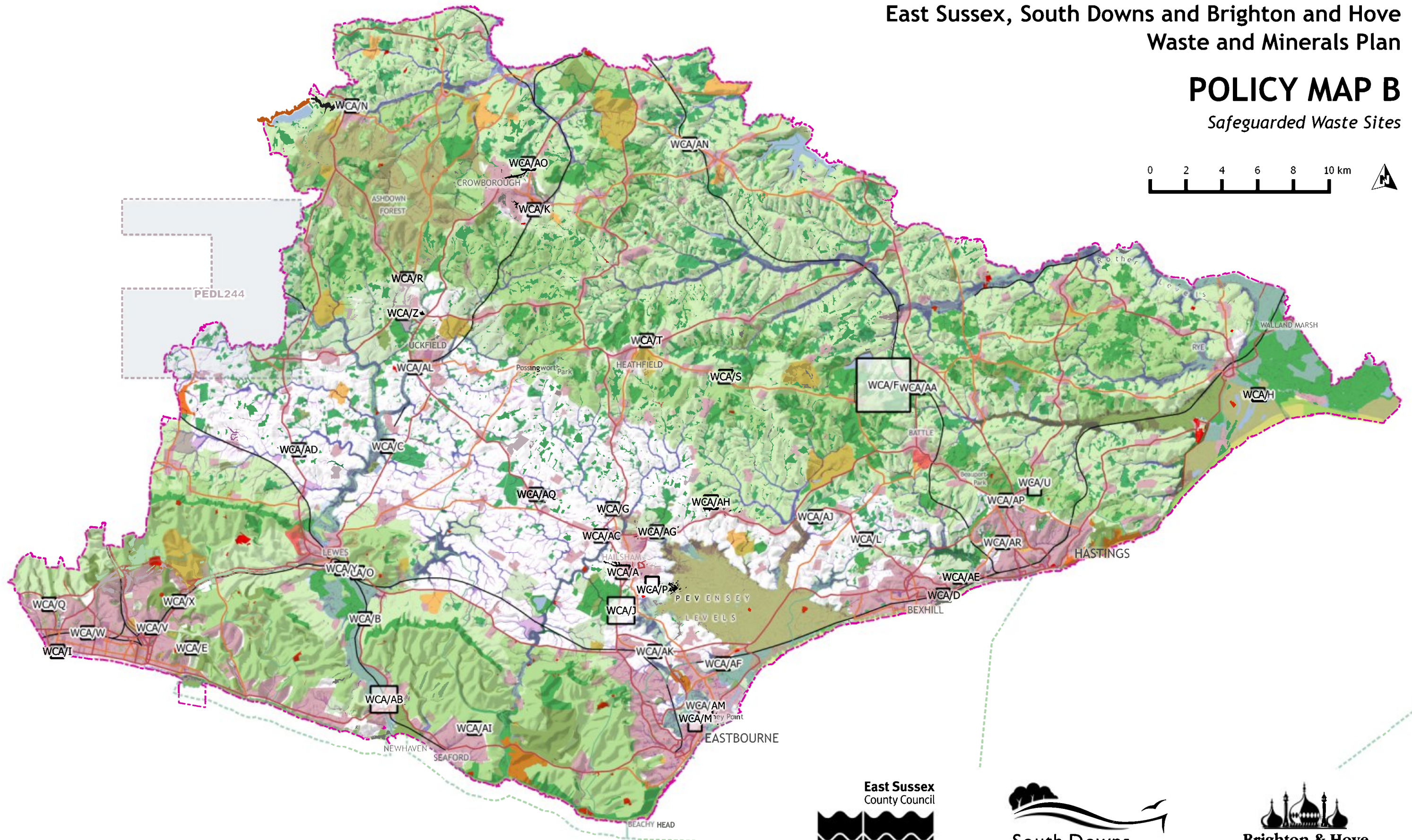
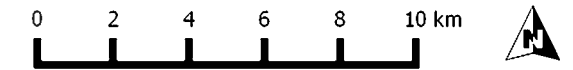


This map is reproduced from Ordnance Survey material with the permission of Ordnance Survey on behalf of the Controller of Her Majesty's Stationary Office © Crown copyright. Unauthorised reproduction infringes Crown copyright and may lead to prosecution or civil proceedings. 100019601. 2016. Environmental Designations © Brighton & Hove City Council / © East Sussex County Council / © Natural England 2016. Local consists of SSSI, Local Nature Reserves; National consists of SSSI and Ancient Woodland; International consists of RAMSAR; Special Protection Areas (SPA); and Special Areas of Conservation (SAC). Flood zones and Surface Water Extents © Environment Agency 2016. Historic Battlefields, Historic Parks and Gardens; County Parks and Scheduled Monuments © English Heritage 2016. Petroleum Exploration Development Licence Areas © Department for Energy and Climate Change 2016.

East Sussex, South Downs and Brighton and Hove Waste and Minerals Plan

POLICY MAP B

Safeguarded Waste Sites



- | | | |
|--|----------------------------|---|
| WMSQ Inset Map Boxes | Historic Parks and Gardens | Environmental Designation - Local |
| Plan Area | Country Parks | Environmental Designation - National |
| Petroleum Exploration Development Licence Area | Scheduled Monument | Environmental Designation - International |
| Marine Conservation Zone | EA Floodzone 2 | National Park and AONB |
| Historic Battlefield | EA Floodzone 3 | |

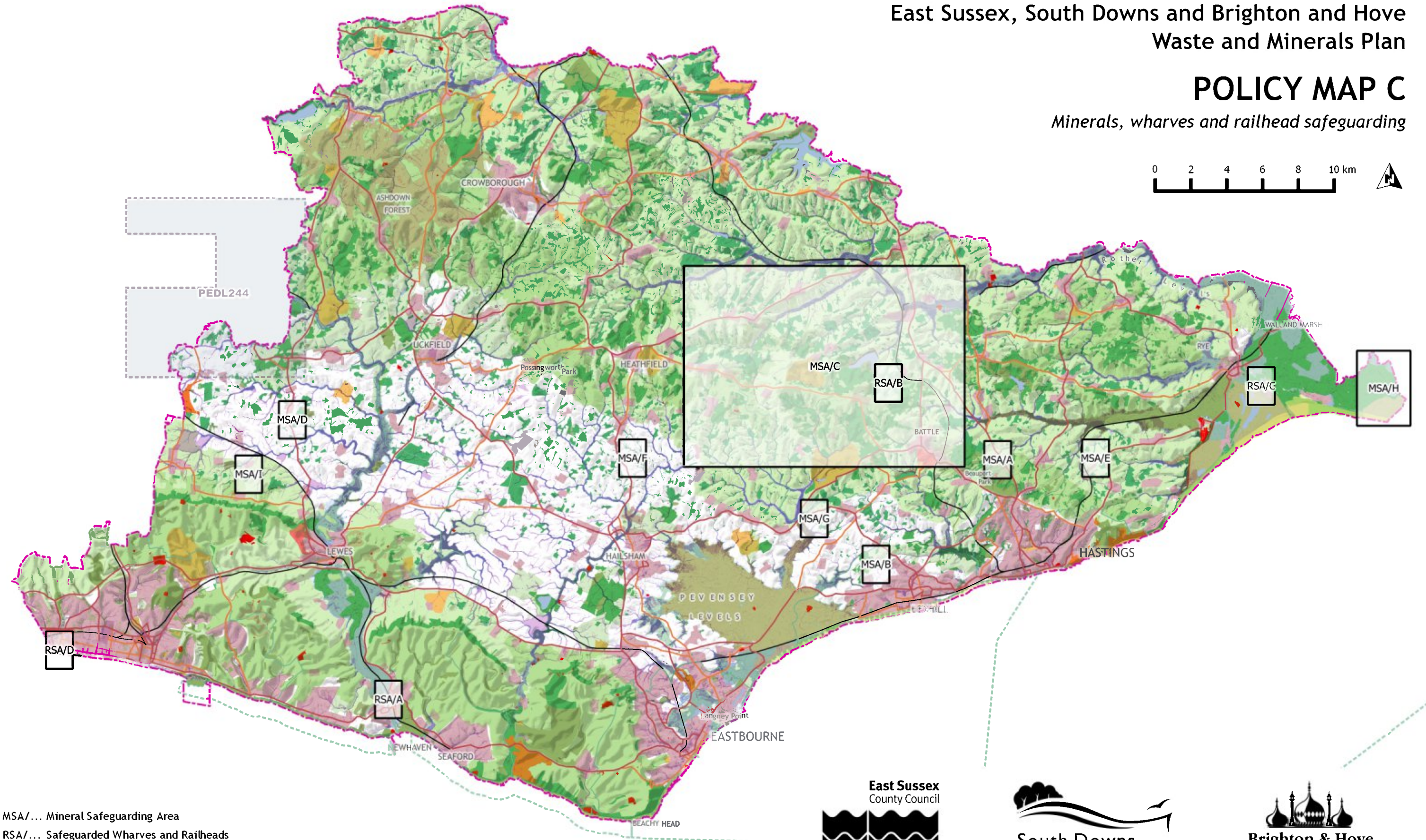
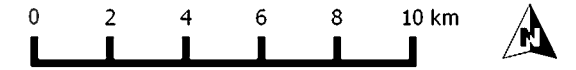


This map is reproduced from Ordnance Survey material with the permission of Ordnance Survey on behalf of the Controller of Her Majesty's Stationary Office © Crown copyright. Unauthorised reproduction infringes Crown copyright and may lead to prosecution or civil proceedings. 100019601. 2016. Environmental Designations © Brighton & Hove City Council / © East Sussex County Council / © Natural England 2016. Local consists of SSSI, Local Nature Reserves; National consists of SSSI and Ancient Woodland; International consists of RAMSAR; Special Protection Areas (SPA); and Special Areas of Conservation (SAC). Flood zones and Surface Water Extents © Environment Agency 2016. Historic Battlefields, Historic Parks and Gardens; County Parks and Scheduled Monuments © English Heritage 2016. Petroleum Exploration Development Licence Areas © Department for Energy and Climate Change 2016.

East Sussex, South Downs and Brighton and Hove Waste and Minerals Plan

POLICY MAP C

Minerals, wharves and railhead safeguarding



MSA/... Mineral Safeguarding Area
RSA/... Safeguarded Wharves and Railheads

- | | | |
|--|----------------------------|---|
| WMSP Inset Map Boxes | Historic Parks and Gardens | Environmental Designation - Local |
| Plan Area | Country Parks | Environmental Designation - National |
| Petroleum Exploration Development Licence Area | Scheduled Monument | Environmental Designation - International |
| Marine Conservation Zone | EA Floodzone 2 | National Park and AONB |
| Historic Battlefield | EA Floodzone 3 | |



This map is reproduced from Ordnance Survey material with the permission of Ordnance Survey on behalf of the Controller of Her Majesty's Stationary Office © Crown copyright. Unauthorised reproduction infringes Crown copyright and may lead to prosecution or civil proceedings. 100019601. 2016. Environmental Designations © Brighton & Hove City Council / © East Sussex County Council / © Natural England 2016. Local consists of SSSI, Local Nature Reserves; National consists of SSSI and Ancient Woodland; International consists of RAMSAR; Special Protection Areas (SPA); and Special Areas of Conservation (SAC). Flood zones and Surface Water Extents © Environment Agency 2016. Historic Battlefields, Historic Parks and Gardens; County Parks and Scheduled Monuments © English Heritage 2016. Petroleum Exploration Development Licence Areas © Department for Energy and Climate Change 2016.